



**WEIR**

**ESCO**

UltraEdge™ Mining Lip System for LHD Machines

## The benefits of upgrading to the UltraEdge™ system

Trusted at mines worldwide, ESCO® products are the benchmark for productivity and reliability. ESCO's new UltraEdge™ shroud system sets the new standard in underground LHD applications. In today's competitive production environment extending machine uptime and maintaining penetration are critical elements of performance. The new bolt on shroud system helps to reduce maintenance costs through improved reliability, faster, and safer replacement.

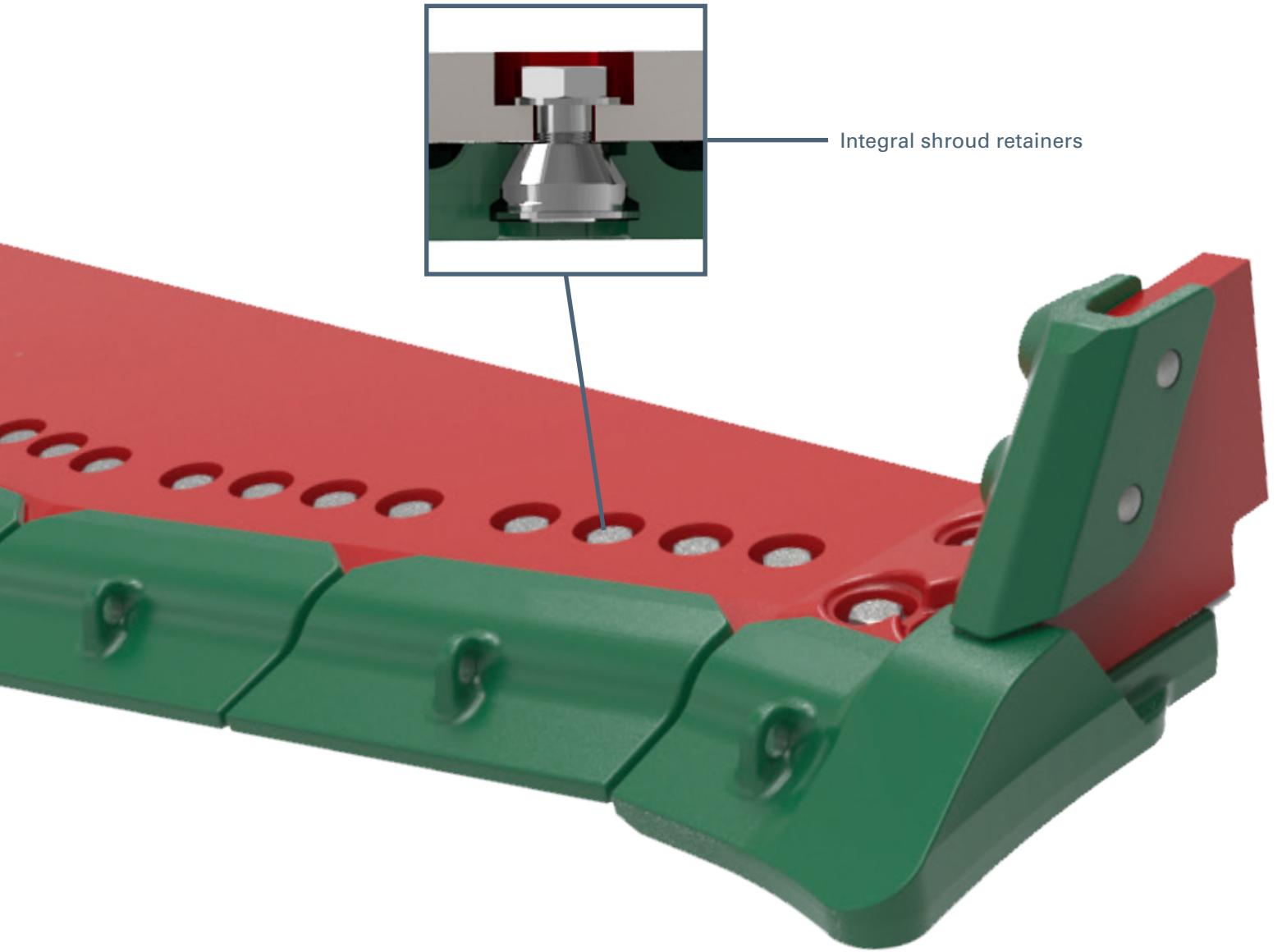


## Sharper Profile = Improved Penetration = Reduced Energy

### Superior performance

Durable ESCO solution for improved penetration and less maintenance interaction

- Up to 66% improvement in wear life
- Sharper profile through useful life improves performance
- Integrated retention for minimized handling and improved safety



**Suitable for any bucket width**



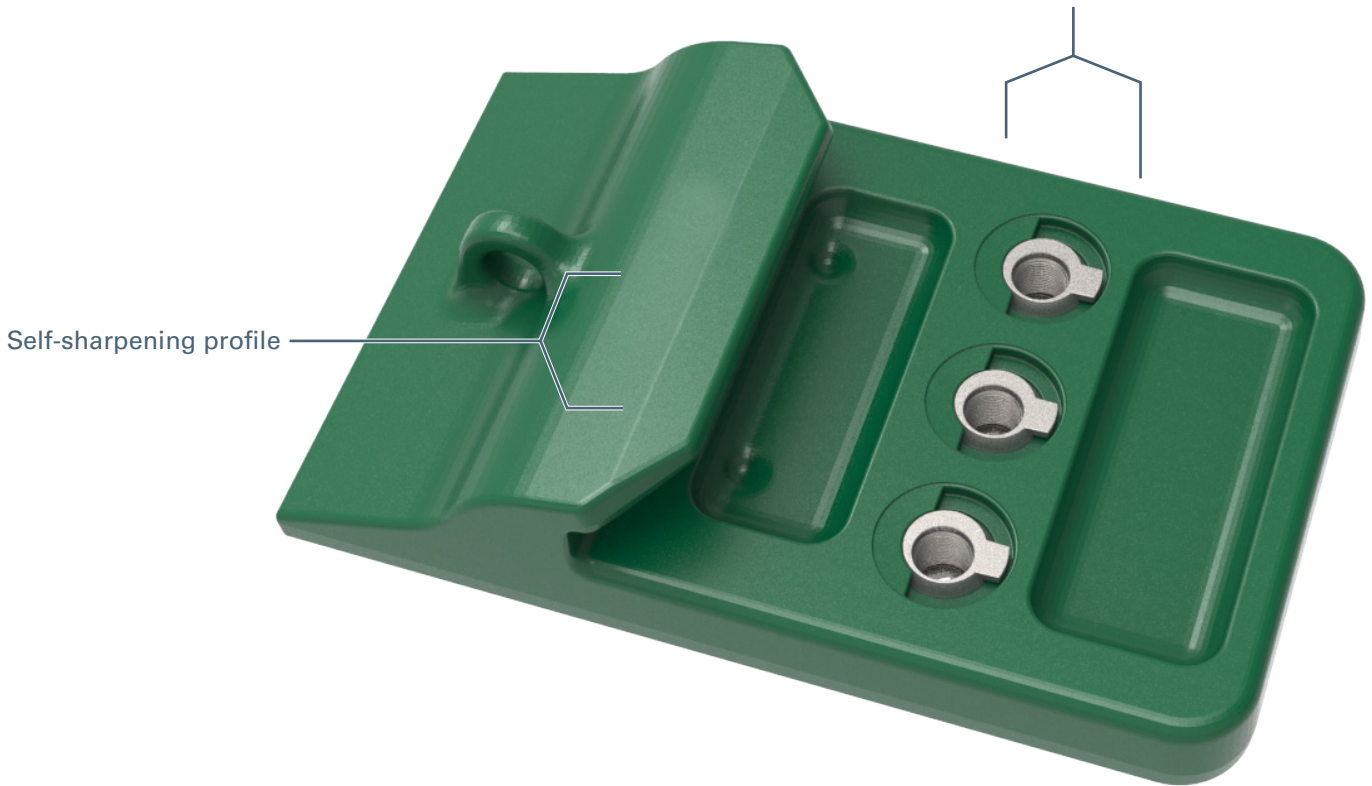
# Maximum productivity

Reliable retention less maintenance

Improved productivity

- Slim, self sharpening profile throughout operating life
- More usable wear metal for increased stope production time
- Improved alloy hardness for longer life and better uptime

Multiple retainers = Better reliability



**“66% longer shroud life.”**

– Copper Mine, Australia

**“The lip has a very sharp profile as it wears.”**

– Copper Mine, Australia



**25%** Reduced G.E.T. operating cost

**We reduced our operating costs and aligned our G.E.T. changes with engineering services - reducing how often we had to bring loaders to the surface.**

– Copper Mine, Australia

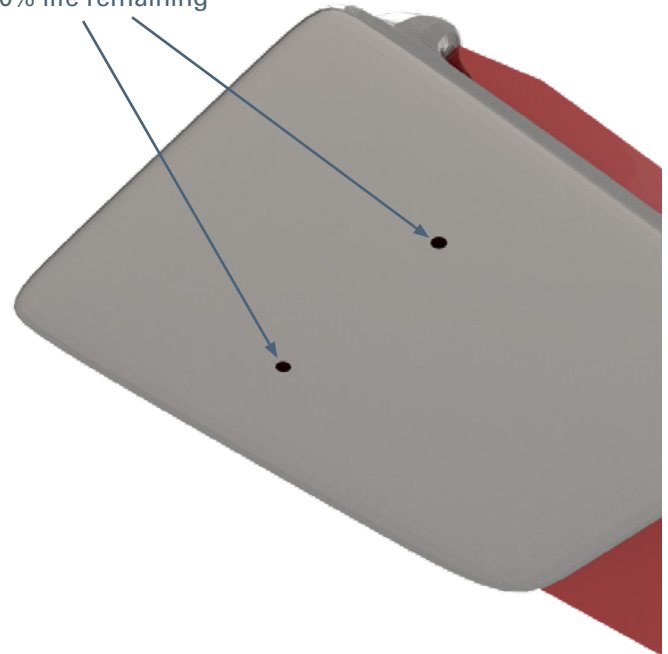
#### Improved system reliability

- Multiple retainers per shroud increase clamping force and reduce any shroud loss
- Positively retained shroud locks minimize handling of parts and misaligned installation
- Wear indicators at 10% remaining life to improve change out planning

#### Reduced maintenance costs

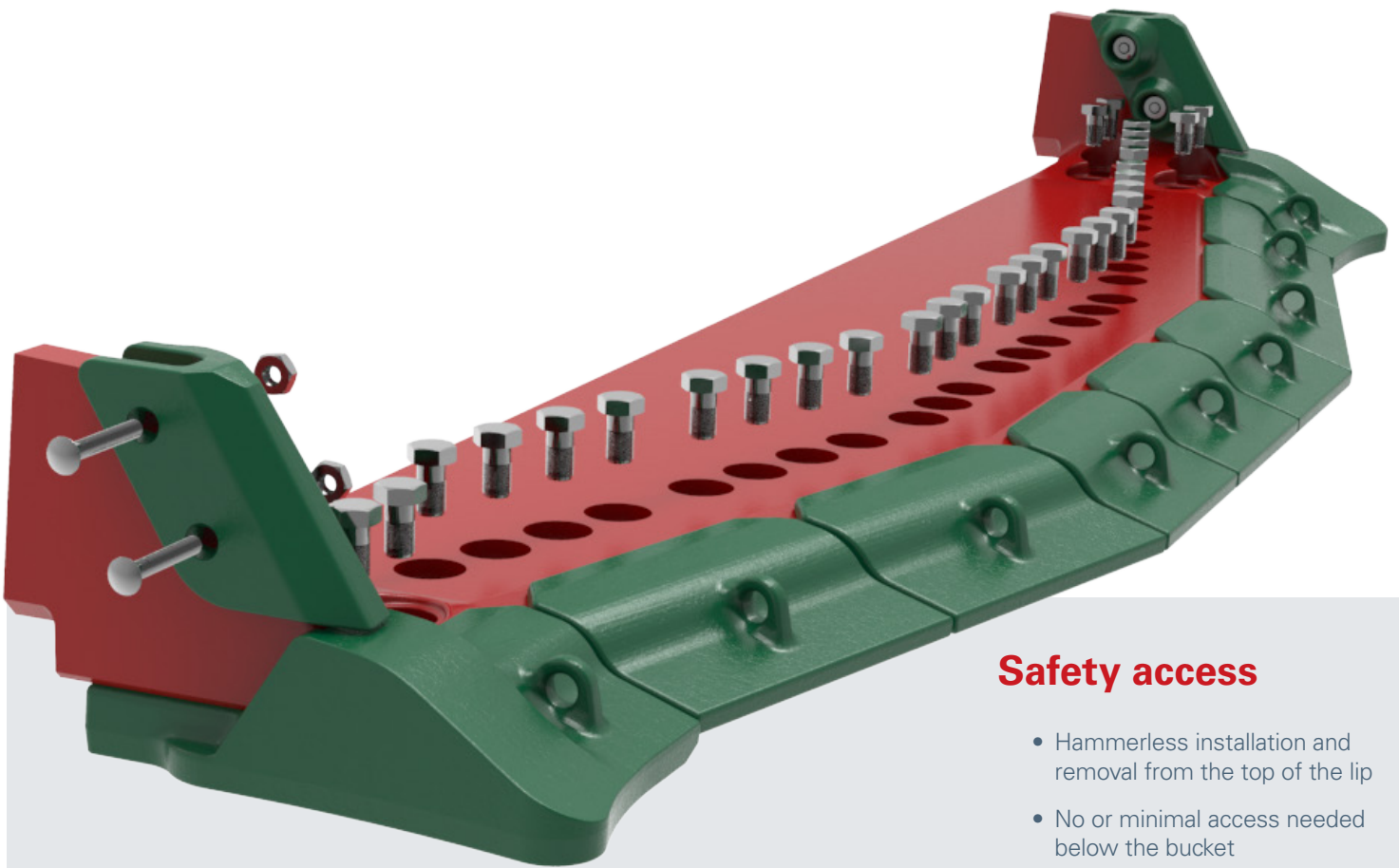
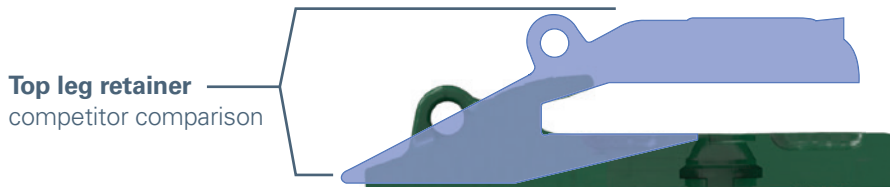
- Longer shroud life, better ability to align engine services with G.E.T. changes, reducing frequency for bringing loaders to the surface
- Integral locks reduce change out time and inventory costs
- Greater time between major lip rebuilds due to an average of 11% reduction in peak stress in cast lip ends

Wear indicators at 10% life remaining



## Shroud profile

Shrouds have been contoured to protect the underside of the lip, and when worn have the lowest possible throw away mass. The UltraEdge™ Shroud System does not have a top leg and utilizes multiple underside retainers that allow the material distribution to be optimized, providing a low profile shroud even when new.



## Safety access

- Hammerless installation and removal from the top of the lip
- No or minimal access needed below the bucket

## Shroud sizing guide

The UltraEdge™ System has a variety of sizing options to suit all lip width configuration, contact your local ESCO representative for a shroud configuration to suit your LHD bucket.



E325S – Straight shroud



E325L and E325R – Left and right hand shrouds



EEBFL and EEBFR – Left and right hand flared corners



Wing shroud right



E415S – Straight shroud



E430L and E430R – Left and right hand shrouds



EEB2L and EEB2R – Left and right hand half-life corners



Wing shroud left

## Machine sizing guide

The UltraEdge System is suitable for 50 mm and 60 mm lip thicknesses

Below is reference list of machines. Contact your ESCO representative for a tailored solution for your LHD bucket. Customizable to fit your machine and lip width.

Load haul dump loaders

Sandvik	Sandvik Toro	Caterpillar	Atlas Copco
LH512	0010	R1600	ST1030
LH514	0011	R1700	ST14
LH517	650	R2800	ST18
LH21	1250	R2900	-
-	1400	R3000	-
-	2500	-	-

**Note:** The table above provides general machine sizing guidance of common LHD loaders, taking in account all global mining applications, we encourage you to discuss your specific application with an ESCO representative, when deciding on the right product.



**ESCO Group LLC – A Weir Group Division**  
2141 NW 25th Ave,  
Portland, OR 97210  
USA

**[www.esco.weir](http://www.esco.weir)**

P3043MIN-ENG-L1123

Copyright © 2018, ESCO Group LLC. All rights reserved.